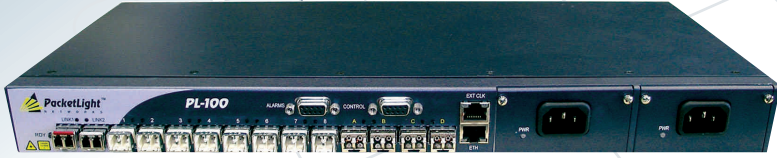


PL-100

Business Continuity and Disaster Recovery
Over Next-Generation SONET/SDH



PL-100 incorporates the latest GFP/VCAT, LCAS and FC-BB standards for flexible, high throughput and long-range transport of FC, Ethernet, and ESCON in Business Continuity Applications over SONET/SDH Networks.

Using PL-100, carriers can introduce new storage transport services over existing networks

- Smooth interoperability with SONET/SDH equipment using FC-BB, and GFP/VCAT/LCAS
- Redundant power and uplink for carrier grade reliability
- Fast provisioning using the existing public infrastructure and operation systems
- Best use of free SONET/SDH time slots using VCAT
- Minimal power consumption and reduced footprint
- Full remote control and monitoring

PL-100 is Customer Premises Equipment (CPE) that connects to the **existing SONET/SDH network**. It enables the smooth addition of new Storage and Data services using SONET/SDH advanced GFP/VCAT/LCAS capabilities and existing OSSs/NMSs.

The PL-100 can be used as FC and GbE Muxponder for Dark Fiber and DWDM Networks. Maximizing the performance of the FC over distance and reducing the number of wavelengths needed.

Storage and Data over OC-48/STM-16 GFP/VCAT/LCAS

PL-100 provides new solutions to address business continuity and disaster recovery applications.

The device can be used over existing SONET/SDH infrastructures, DWDM networks, and dark fiber, utilizing the new standards of Generic Framing Procedure (GFP), Virtual Concatenation (VCAT), Link Capacity Adjustment Scheme (LCAS) and FC-BB.

PL-100 is storage transport CPE/Access Multiplexer

Designed primarily as an access/transport device, the PL-100 is typically deployed as CPE in enterprise campus environments or at Central Sites.

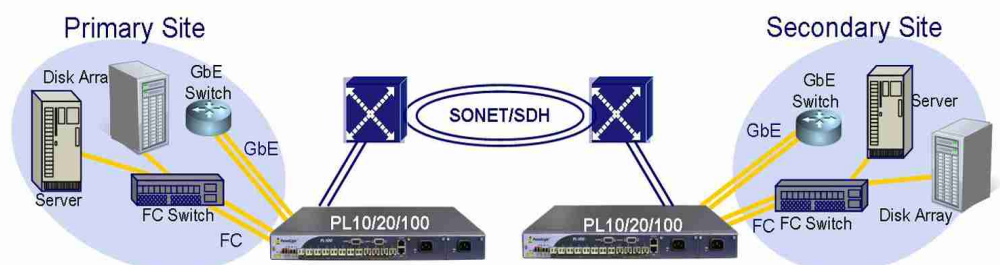
The PL-100 can also be used as a complimentary solution to MSPPs, Metro DWDM, and Ethernet Networks. It can multiplex several Data and Storage services into a protected OC-48/STM-16 single wavelength and maintain the FC throughput over distance.

PL-100 enables high-end multi-application storage extension offerings

- High speed (up to 2.5 Gbps) synchronous or asynchronous backup, mirroring, and simultaneous data replication for multiple applications
- Interconnection of SAN and LAN islands over remote Metro sites
- High FC throughput over long distances
- Multiplexing of Data and Storage over single wavelength

PL-100 effectively combines key functionalities

- Buffer credit flow control
- FC rate limiting without packet loss
- Programmable ports for Fibre Channel/GbE
- Simultaneous support of FC, ESCON, and on the same wavelength
- FC/GbE/Escon native performance monitoring
- SONET/SDH performance monitoring
- Small Form-Factor Pluggable (SFP) optics
- Friendly Web Server GUI and support for SNMP management Interface



PL - 100

Business Continuity and Disaster Recovery Over Next-Generation SONET/SDH

Technical Specifications

System

Topology	Point-to-Point (Point-to-Multipoint) or Ring
Transport Network/Medium	SONET/SDH/Metro DWDM/dark fiber
Synchronization	Loop timing, Internal source
Safety	CE Class B, UL 60950, FCC
Software Upgrade	Traffic hitless – dual image
Storage Applications	Synchronous or asynchronous

Uplink Side

Interface	OC-48/STM-16; GFP/VCAT/LCAS
VCAT	VC-3/VC-4/STS-1 granularity
Protection	1+1 optional SONET/SDH protection
Wavelength	1310 nm SR/IR, 1550 nm LR/ER, CWDM, DWDM

Service Side

Interfaces	12 clients, 1G-FC, 2G-FC, GbE, ESCON, SFP, 1310nm, 850nm
Interface Mix	Mix of ESCON, FC, GbE over channelized trunk with GFP/VCAT/LCAS
FC Data Mapping	GFP-F, FC-BB with rate control
FC Distance	Buffer credit flow control, up to 1600Km at 2G FC
ESCON Data Mapping	GFP-T
GbE Data Mapping	GFP-F with rate control

Network Management

Management Ports	10/100BT RJ-45, RS-232 DB-9, DB-9 Dry contact alarms
Protocols	SNMP, FTP, PPP, HTTP
DCN	LAN/WAN/VPN, dialup (PPP)
Management	Web server Application
OAM	<ul style="list-style-type: none">• SONET/SDH Loopbacks• Standard SONET/SDH alarms and Performance Monitoring• Standard native ESCON/FC/GbE alarms and Performance Monitoring• Event logger
Remote Management	PPP/HDLC/DCC
Visual Indicators	LED status indicators for client ports, line interfaces, power, and shelf

Power Supply

AC/DC	100-240V AC, -48V DC, 50 Watts max
Redundancy	Single or dual feeding, pluggable

Environmental

Operating Temperature	-5° C to +55° C (+23° F to +131° F) Operational
-----------------------	--

Physical Dimensions

1.77" (1 RU) (H) x 19" (W) x 9.44" (D) 43.7 mm (H) x 440 mm (W) x 240mm (D)
--